

Spectral analysis of multi-year GNSS code multipath time-series

Jacek Kudrys

*Faculty of Mining Surveying and Environmental Engineering;
AGH University of Science and Technology
jkudrys@agh.edu.pl; ORCID: 0000-0002-4986-7436*

Abstract: In the presented study multi-year time series of changes in the L1 pseudo-range multipath are analysed. Data from 8 stations of the EUREF Permanent Network (EPN) were used in the study. Periodic components present in the signal and their stability over time were analysed. Also, the type of background noise was determined, based on the spectral index. In some cases, the presence of weak components with a 1/2 and 1/3 of the Chandler period has also been found. Time-frequency analysis shows that periodic signals are not stationary in most of the examined cases, and particular signal components occur only temporarily. The analysed signals were characterised by pink noise in the lower frequency range and by white noise for higher frequencies, which is also characteristic for time series of coordinates obtained from GNSS measurements.

Keywords: GNSS, code multipath, spectral analysis, spectral index

Introduction

GNSS multipath is studied mainly as a source of errors affecting code and phase observations in positioning. The impact of multipath on GNSS data is widely analysed in both time and frequency domain [1][2][3]. The magnitude of the pseudo-range measurement error caused by multipath can be determined based on linear combinations of code and phase observations [4]. The impact of multipath on phase observations is estimated based on changes in signal power reaching the GNSS receiver (signal to noise ratio) [5][6][7].

The analysis of the multipath phenomenon applies, among others in GNSS reflectometry, where it is often used to study the change in the environment of the GNSS antenna. Periodic oscillations in the multipath are the basis for determining the change in the position of the surface reflecting the satellite signal about the phase centre of the antenna. Multipath oscillations analyses allow assessing changes in snow cover thickness [8], ocean surface [9][10], and soil moisture [11].

At EPN/IGS reference stations, indices of the multipath are routinely monitored [12] [13], with basic statistical parameters characterising the variability of the multipath for daily observations on individual carrier frequencies being mainly calculated. For this purpose, software such as G-Nut/Anubis [14] or teqc [15] is used.

Apart from short-term changes, the multipath is also characterised by seasonal variability, resulting from annual changes in vegetation, soil moisture, and snow or ice layer thickness. Therefore, when analysing the long time series of multipath, one should expect components with a period close to one year. Since the value of the error caused by multipath is also affected by the position of the antenna relative to reflecting obstacles, even small changes in the position of the antenna can also cause changes in indices describing the multipath.

In this work, multi-year time-series of indices characterising GNSS multipath for 8 European permanent stations belonging to the EPN/IGS network (Fig. 1) were analysed in terms of the occurrence of periodic components. The analysed time-series of L1 code multipath were obtained using freely available teqc software.

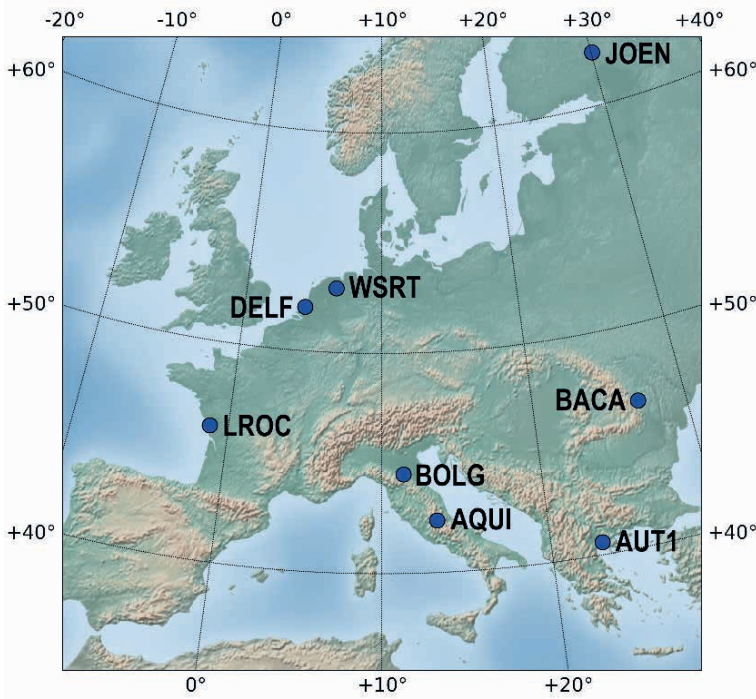


Fig. 1. Analysed EPN/IGS stations

Methodology

The multipath in code pseudoranges at L1 frequency is described by the value of the m_{p1} index, calculated as a linear combination of phase and code observations for a single epoch in accordance to the equation [15]:

$$m_{p1} = p_1 - \left(1 - \frac{2}{1-\beta}\right)\Phi_1 - \frac{2}{1-\beta}\Phi_2 \quad (1)$$

where:

m_{p1} – multiparty error,

p_1 – L1 pseudorange,

Φ_1 – L1 phase,

Φ_2 – L2 phase,

$\beta = (L1/L2)^2$.

The multi-year time series were created on the base of the root mean square of m_{p1} index from daily observations. The calculated value of m_{p1} depends on many factors. In addition to the phenomenon of interference of signals arriving in different ways, the m_{p1} is affected by changes caused by the replacement of the antenna, receiver or firmware upgrade. A change in the configuration of the measuring equipment can cause a jump in the value of m_{p1} as well as a change in the noise level or amplitude of the examined signal. There may also be data gaps in the time series due to the temporary inactivity of the reference station [12][13].

For research purposes, 8 permanent stations were selected from Europe (Fig. 1) with the longest continuous observation possible and the smallest number of changes in equipment in the analysed period. Data in RINEX format comes from the EUREF Permanent Network data centres, and daily RMS m_{p1} values have been calculated using teqc software.

The main goal of the research was to verify the occurrence of the characteristic periodic components in the m_{p1} times series. Before the spectral analysis, data preprocessing had to be carried out. For this purpose, the jumps in value, the linear trend and outliers ($> 5\sigma$) were removed from the obtained m_{p1} time series, which caused additional data gaps in the time series. Due to discontinuity in the observational data, the method of Lomb-Scargle periodogram was used. This method is effective for spectrum analysis in the case of non-evenly data sampling [16] [17]. The existence of predetermined periodic components in the signal has not been assumed in the paper. Based on the spectrum obtained, the presence of components with the tropical year period (356.25 days) and the Chandler wobble period (433 days) and their three subsequent harmonics were verified.

For GNSS observations, the time series of coordinates are most often analysed [18]. Based on the power-law $P \propto f^k$, where P is power spectral density, f is the frequency and k spectral index, it can be shown that in this type of observation, background noise is a combination of pink noise and white noise [19][20].

In this work, for the background noise determination, the spectral index k was estimated based on fitting a straight line to the power spectral density expressed on a logarithmic scale. The verification of stationarity in the frequency domain was performed with wavelet transform, a widely used tool for the characterisation of frequency variations in the signal [21] that preserves information on both the time and frequency of the signal. Individual harmonics in the examined time series were analysed using the continuous wavelet time-frequency spectrum with a complex Morlet wavelet.

Table 1. m_{p1} time-series statistics

station	m_{p1} time series statistics					amplitude of harmonics of annular period				spectral indices	
	time span [y]	epochs	mp1 min [m]	mp1 max [m]	percent of original observ.	1 [mm]	1/2 [mm]	1/3 [mm]	1/4 [mm]	k1	k2
AQUI	14.6	4826	-0.037	0.057	77%	8	4	-	-	-0.53	-0.75
AUT1	14.5	2879	-0.238	0.269	93%	20	23	9	-	-0.69	-0.25
BACA	13.7	4650	-0.178	0.234	97%	9	11	-	-	-0.81	-0.02
BOLG	13.5	4554	-0.095	0.155	85%	17	4	5	-	-1.02	-0.30
DELf	15.4	5363	-0.081	0.124	95%	27	4	5	-	-1.38	-0.33
JOEN	20.6	7011	-0.017	0.136	96%	13	13	5	6	-0.84	-0.66
LROC	13.2	4236	-0.074	0.126	74%	8	3	-	-	-0.96	-0.30
WSRT	19.7	7041	-0.082	0.106	97%	13	4	4	-	-1.33	-0.62

Results

The studied RMS m_{p1} time series covered a period from 13.2 to 20.6 years. At the preprocessing stage, some outliers were removed from the time series obtained directly as a result of the calculations (eq. 1). Depending on the permanent station, between 3% and 26% of the original data was deleted. Based on spectral analysis, the occurrence of annual components was determined at the significance level of 95%. In the case of the BACA, BOLG, DELF and WSRT stations, in addition to the annual component and its higher harmonics, weak signals of 1/2 or 1/3 of the Chandler period are visible (Fig. 3). These weak signals of small amplitude, which appeared in the m_{p1} spectrum require further research. The summary of data regarding the time series for each permanent station tested are presented in Table 1.

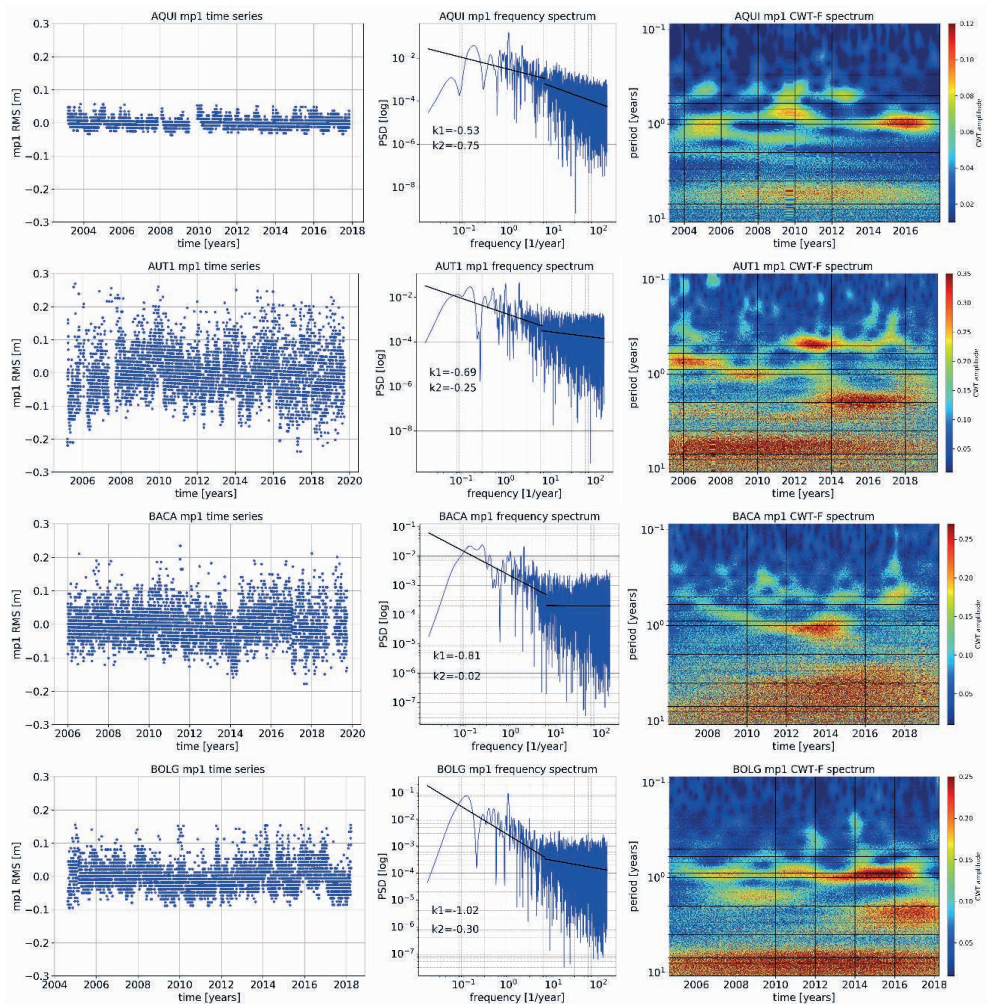


Fig. 2a. Time series of RMS of m_{p1} parameter (left column), frequency spectrum with spectrum indices (middle column) and continuous wavelet time-frequency spectrum (right column) for 4 GNSS stations AQU1, AUT1, BACA and BOLG

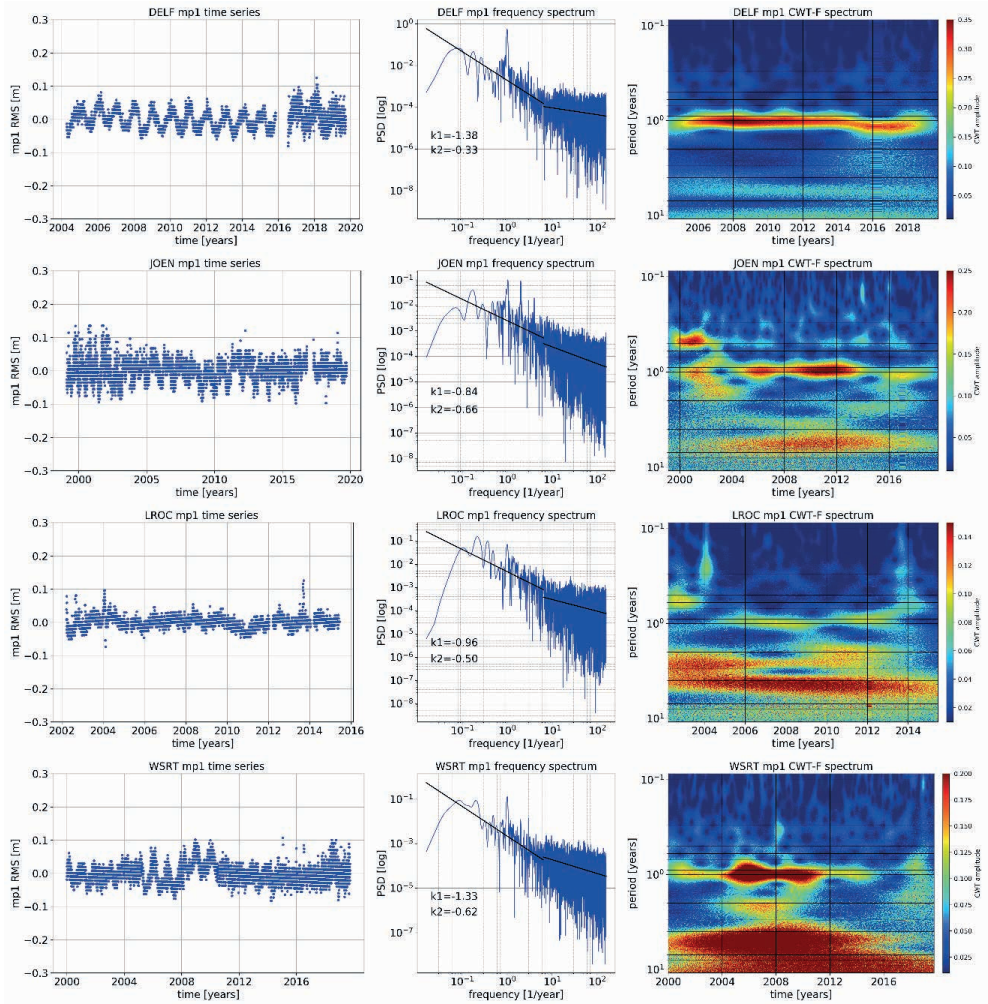


Fig. 2b. Time series of RMS of m_{p1} parameter (left column), frequency spectrum with spectrum indices (middle column) and continuous wavelet time-frequency spectrum (right column) for 4 GNSS stations DELF, JOEN, LROC and WSRT

All the analysed stations show power-law behaviour in the entire spectrum. It was estimated a corner frequency equals 6 cycles per year (cpy) between the low-frequency part where pink noise appears and the higher frequency with dominating uncorrelated white noise. Spectral indices k_1 and k_2 were calculated, by dividing the frequency range into two parts, relative to the corner frequency: k_1 – below 6 cpy and k_2 – above 6 cpy (middle column in Figures 2a and 2b). In most cases, the background noise in the low-frequency part of the spectrum is close to pink noise, and as the frequency increases, the noise character becomes white noise ($-1.5 < k_1 < -0.5 < k_2$). For the AQU1 and JOEN stations, pink noise is dominant in the entire frequency range. Table 1 summarises the values of spectral indices k_1 and k_2 for the permanent stations analysed.

Time-frequency analysis clearly shows the non-stationarity of long-term multipath changes. In most of the analysed cases, components with an annual period and its higher harmonics appear only in a part of the examined time interval (Fig. 2a and 2b – right column). It may be the result of changes in the station’s equipment configuration or changes in the close vicinity of the antenna. Determining precisely the cause of the change in the multipath effect is difficult because not all events that may affect this factor are recorded in the station’s logs. For example, for the AQUI stations, the dominant annual component is visible in 2004-2006, 2009-2011 and 2014-2019. In the case of the WSRT station, a strong annual signal appears in the years 2004-2012. Only for the DELF stations, where the antenna and the receiver remain unchanged for the majority of the analysed time interval (2004-2015), can a constant, clear annual component be seen. After changing the antenna at the DELF station in 2015, the correlated change in the time-frequency spectrum is visible.

Conclusions

The time series of the m_{p1} parameter describing the signal’s multipath in the observed L1 code was analysed. For the analysis 8 GNSS permanent stations from Europe were chosen. The frequency spectrum obtained with the Lomb-Scargle periodogram indicates the presence of 1 cpy frequency components and some higher harmonics. In the signal spectrum from several reference stations, the second and third harmonic of the Chandler frequency are also visible. The annual component has been expected because it reflects seasonal changes in the vicinity of the GNSS antenna. The occurrence of the Chandler wobble period in the m_{p1} time series requires detailed research. Background noise in the obtained spectrum can be described as pink noise for lower frequencies and white noise for frequencies above 6 cpy. A similar distribution of noise in the spectrum is also characteristic for GNSS coordinate time series. Time-frequency analysis allows confirming non-stationarity and high variability of signal parameters over time. It is caused mainly by the equipment replacement in the reference stations and modification of the operating parameters of the receivers.

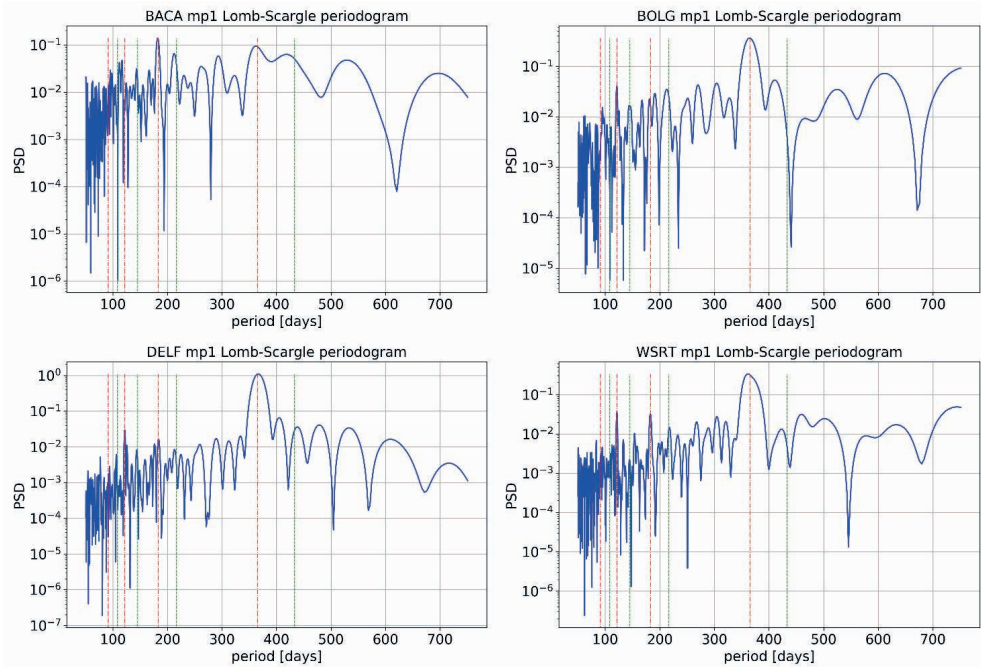


Fig. 3. Periodograms of RMS of daily m_{p1} parameter for the BACA, BOLG, DELF and WSRT stations. Orange (dash-dot) vertical lines correspond to the yearly period and its first three harmonics. Green (dash) vertical lines correspond to the Chandler wobble period and its first three harmonics

Acknowledgements

This work has been supported by AGH-UST statutory research no 16.16.150.545. Calculations were made with NumPy [22], Pandas [23] and PyWavelets [24] Python packages. The Figures were prepared with Python Matplotlib Library [25].

References

- [1] Yang, C., & Porter, A., “Frequency-domain characterization of GPS multipath for estimation and mitigation”, in *Proceedings of the 18th International Technical Meeting of the Satellite Division of The Institute of Navigation*, ION GNSS 2005, 2005, pp. 2104–2118.
- [2] Kong, X., “GPS modeling in frequency domain”, in *The 2nd International Conference on Wireless Broadband and Ultra Wideband Communications*, AusWireless 2007. <https://doi.org/10.1109/AUSWIRELESS.2007.36>
- [3] Zuo, X., Bu, J., Li, X., Chang, J., & Li, X., “The quality analysis of GNSS satellite positioning data”, *Cluster Computing*, 22, 2019, pp. 6693–6708. <https://doi.org/10.1007/s10586-018-2524-1>
- [4] Breivik, K., Forssell, B., Kee, C., Enge, P., & Walter, T., “Estimation of multipath error in GPS pseudorange measurements”. *Navigation, Journal of the Institute of Navigation*, vol. 44(1), 2019, pp.43–52. <https://doi.org/10.1002/j.2161-4296.1997.tb01938.x>
- [5] Rost, C., & Wanninger, L. “Carrier phase multipath mitigation based on GNSS signal quality measurements”, *Journal of Applied Geodesy*, 3(2), 2009. <https://doi.org/10.1515/jag.2009.009>
- [6] Axelrad, P., Comp, C., & MacDoran, P., “Use of signal-to-noise ratio for multipath error correction in GPS differential phase measurements: methodology and experimental results”, in *Proceedings of ION GPS*, 1, 1994, pp. 655–666.

- [7] Bilich, A., & Larson, K. M., “Mapping the GPS multipath environment using the signal-to-noise ratio (SNR)”. *Radio Science*, 42(6), 2007. <https://doi.org/10.1029/2007RS003652>
- [8] Yu, K., Ban, W., Zhang, X., & Yu, X., “Snow depth estimation based on multipath phase combination of GPS triple-frequency signals”. *IEEE Transactions on Geoscience and Remote Sensing*, vol. 53(9), 2015, pp. 5100–5109. <https://doi.org/10.1109/TGRS.2015.2417214>
- [9] Komjathy, A., Armatys, M., Masters, D., Axelrad, P., Zavorotny, V., & Katzberg, S., “Retrieval of ocean surface wind speed and wind direction using reflected GPS signals”, *Journal of Atmospheric and Oceanic Technology*, vol. 21(3), 2004, pp. 515–526. [https://doi.org/10.1175/1520-0426\(2004\)021<0515:ROOSWS>2.0.CO;2](https://doi.org/10.1175/1520-0426(2004)021<0515:ROOSWS>2.0.CO;2)
- [10] Kim, S. K., & Park, J., “Monitoring sea level change in arctic using GNSS-reflectometry”, in *ION 2019 International Technical Meeting Proceedings*, 2019, pp. 665–675. <https://doi.org/10.33012/2019.16717>
- [11] Chang, X., Jin, T., Yu, K., Li, Y., Li, J., & Zhang, Q., “Soil moisture estimation by GNSS multipath signal”. *Remote Sensing*, vol. 11, 1st November 2019. <https://doi.org/10.3390/rs11212559>
- [12] “EUREF Permanent GNSS Network”. Available: <http://epncb.eu/> [Accessed: 05 Jan 2020]
- [13] “International GNSS Service”. Available: <http://www.igs.org/> [Accessed: 05 Jan 2020]
- [14] Vaclavovic, P., & Dousa, J., “G-Nut/Anubis – open-source tool for multi-GNSS data monitoring”, in: *IAG Symposia Series*, Springer, vol. 143, 2016, pp. 775–782. https://doi.org/10.1007/1345_2015_157
- [15] Estey, L. H., & Meertens, C. M., “TEQC: The Multi-Purpose Toolkit for GPS/GLONASS Data”, *GPS Solutions*, 3(1), 1999, pp. 42–49. <https://doi.org/10.1007/PL00012778>
- [16] Lomb, N. R., “Least-squares frequency analysis of unequally spaced data”. *Astrophysics and Space Science*, 39(2), 1976, pp. 447–462. <https://doi.org/10.1007/BF00648343>
- [17] Scargle, J. D., “Studies in astronomical time series analysis. II – Statistical aspects of spectral analysis of unevenly spaced data”, *The Astrophysical Journal*, 263, 1982, p. 835. <https://doi.org/10.1086/160554>
- [18] Klos, A., Bogusz, J., Bos, M. S., & Gruszczynska, M., “Different Approaches to Extract Seasonal Signals” in *Modelling the GNSS Time Series*. Springer International Publishing, 2020. https://doi.org/10.1007/978-3-030-21718-1_7
- [19] Bogusz, J., & Klos, A., “On the significance of periodic signals in noise analysis of GPS station coordinates time series”. *GPS Solutions*, 20(4), 2016, pp. 655–664. <https://doi.org/10.1007/s10291-015-0478-9>
- [20] Ray, J. D., Vijayan, M. S. M., Godah, W., & Kumar, A., “Investigation of background noise in the GNSS position time series using spectral analysis – A case study of Nepal Himalaya”. *Geodesy and Cartography*, 68(2), 2019, pp. 375–388. <https://doi.org/10.24425/gac.2019.128468>
- [21] Torrence Christopher, & P. Compo Gilbert., “A Practical Guide to Wavelet Analysis”. *Bulletin of the American Meteorological Society*, 137(2), 1998, pp. 87–92. [https://doi.org/10.1175/1520-0477\(1998\)079<0061:APGTWA>2.0.CO;2](https://doi.org/10.1175/1520-0477(1998)079<0061:APGTWA>2.0.CO;2)
- [22] Stéfan van der Walt, S. Chris Colbert and Gaël Varoquaux, “The NumPy Array: A Structure for Efficient Numerical Computation”, *Computing in Science & Engineering*, 13, 2011, pp. 22–30, <https://doi.org/10.1109/MCSE.2011.37>
- [23] Wes McKinney, “Data Structures for Statistical Computing in Python”, in *Proceedings of the 9th Python in Science Conference*, 2010, pp. 51–56
- [24] Lee et al., “PyWavelets: A Python package for wavelet analysis”. *Journal of Open Source Software*, 4(36), 2019, p. 1237. <https://doi.org/10.21105/joss.01237>
- [25] John D. Hunter, “Matplotlib: A 2D Graphics Environment”, *Computing in Science & Engineering*, vol. 9, 2007, pp. 90–95. <https://doi.org/10.1109/MCSE.2007.55>